

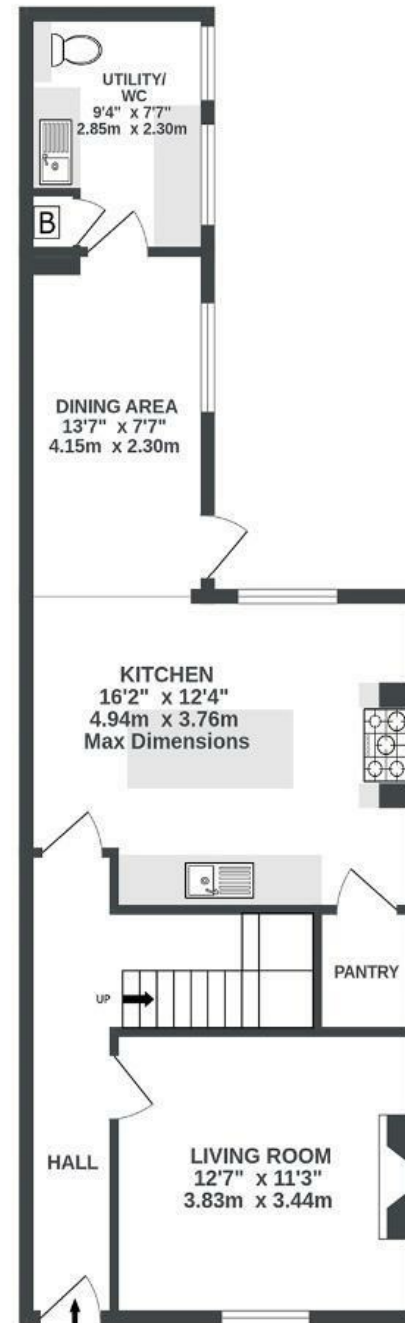
# Oxford Street

## TOTTERDOWN

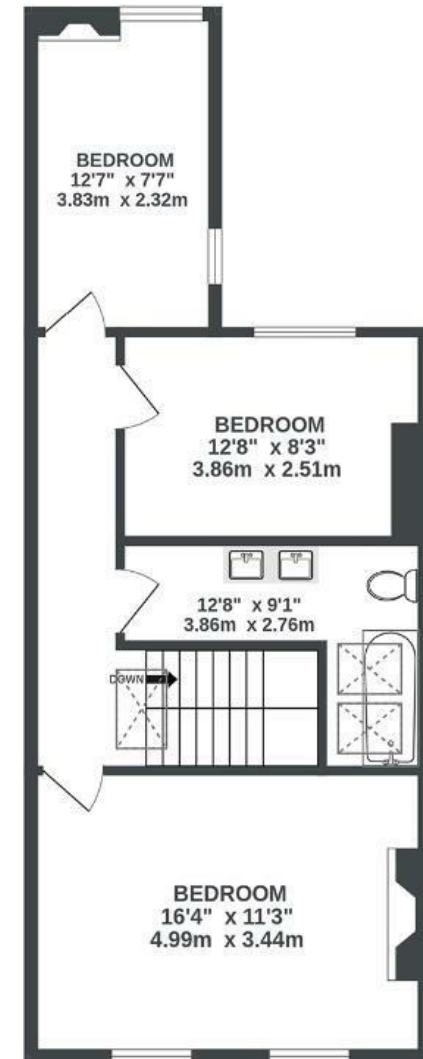
APPROXIMATE FLOOR AREA  
109.1 SQM / 1174 SQFT



GROUND FLOOR  
624 sq.ft. (58.0 sq.m.) approx.



1ST FLOOR  
550 sq.ft. (51.1 sq.m.) approx.



Illustrations are for reference purposes only, measurements are approximate, not to scale.

**Boardwalk**

# Oxford Street

TOTTERDOWN, BRISTOL



£485,000



3 Bedrooms



BS3 4RQ



1 Bathrooms

*"We specialize in high-end property renovations that blend timeless craftsmanship with modern luxury. With a passion for excellence and an eye for detail, we have transformed Oxford Street from a run down home, stripped it back to brick and rebuilt into a bespoke environment that reflects sophistication, functionality, and enduring style."*

